

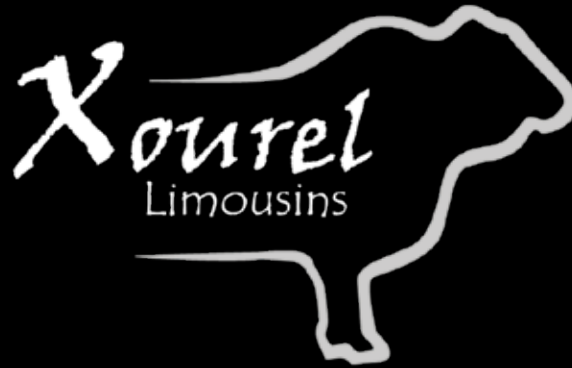


2017 Sale

Xourel
Limousins



2 August
LICHTENBURG



XOUREL LIMOUSINS will be offering **5 exceptional bulls** and **10 special female** lots during the **W-Tvl Limousin Club Sale** on the **2nd of August 2017** at the Lichtenburg Showgrounds. These lots will include Interbreed Champions, National Class Winners, Breedplan Bulls, Show Champions and some of the finest Embryo bred calves!!

Kawrel
Tripitz
XRL1428



Lot 3

IT'S MORE THAN JUST A LIFESTYLE . . .

. . . *It's a legacy*



XOUREL TRIPITZ - XRL1428

They say one seldom get the opportunity to breed an exceptional bull and we here at Xourel, understand that perception is the key to labelling something, and we don't want to label him, but we think Tripitz is one of the special sires bred within the breed over the last few years! In terms of conformation and structure he won the National 20-22 month class at the 2016 national show, was the Intermediate Interbreed Champion in Lichtenburg 2016, BreedPlan bull in Lichtenburg and Vryburg and also Breed Champion bull in Vryburg 2017. When it comes to breeding, his first calves are on the ground, and it would seem that those special growth and conformity traits

are all there!! Some of the best caves of the season was bred from him, emphasizing and confirming his breeding value projections. Pedigree - he is bred from La Rhone Escape – a bull with exceptional admiration throughout the industry, an international trait leader on growth and probably the bull in the industry with the most depth of all Limousin bulls – and if that is not enough – he is pictured in this catalogue at the tender age of 9 years in his working cloths! They say every bull has a dam – the side breeders are truly interested in! From dam's side, there isn't any exceptions – ME0421 is a reproductive gem, having produced 10 natural born calves with an inter calve period of 351 days between calves. She is one of Xourel's loved ladies and a very prominent donor cow

in the Xourel ET program. A cow with a wedge and conformity one rarely find on an old brood cow – she's got it all! All this comes together in a medium framed, long muscled, classy herd sire - He truly is one of the best the industry and Xourel has to offer!



LA RHONE ESCAPE



FLORIS OLIMI

DAUPHIN
VERGESIGTE 0210 DAUPHIN
VERGESIGTE 96 11 LONGFIELDS VOLCAN

Sire: LA RHONE ESCAPE


ETNA
ESSIE SPO0017
HERBOU EMALTDON 96 21E

Animal: XOUREL TRIPITZ

JACRE INCREDIBLE VG9734
JACRE MIKE VG0114
JACRE GENUINE VG9552

Dam: FLORIS OLIMI

ELDORET VALRED
BON CHANCE OLIEN
BON CHANCE ORAL

	Calving Ease DIR	Calving Ease DTRS	Gestation Length	Birth WT	200 Day WT	400 Day WT	600 Day WT	Mat Cow WT	Milk	Scrotal Size	Carcass WT	Eye Muscle Area	Rib Fat	Rump Fat	Retail Beef Yield	IMF
	(%)	(%)	(days)	(kg)	(kg)	(kg)	(kg)	(kg)	(kg)	(cm)	(kg)	(cm ²)	(mm)	(mm)	(%)	(%)
EBV	+1.0	-	-1.4	+1.9	+18	+30	+45	-	+3	+1.4	+27	+0.5	0.0	-0.2	+0.4	+0.1
Acc	41%	-	59%	74%	68%	69%	72%	-	47%	70%	52%	43%	52%	51%	44%	40%
South African breed average EBV																
SA EBV	-0.3	0.7	-0.1	1.8	14	23	29	29	3	0.7	18	0.6	-0.4	0.0	0.6	0.0
International breed average EBV																
INT EBV	0.2	0.7	-1.6	1.6	18	30	42	43	6	0.9	26	1.4	0.0	-0.3	0.7	-0.1
Traits observed: BWT,200WT,400WT,600WT,SS,FAT,EMA,IMF,DOC																

Xourel
Voshaarnooi

— XRL1114



— Lot 2

XOUREL VOSHAARNOOI - XRL1114

One of Xourel's precious show cows! She seldom loses in the showing and has a show resume like few other dams at Xourel! Having won the 18-21 month class at the 2013 national show, various W-Tvl Limousin Club Championships

and individual classes, she truly is a show prospect like few!! Bred from the well-known great show cow of late Ludwig Claassen, La Rhone Donro Princi (Pictured)!! recently entered the Xourel ET program as a donor cow with great IVF success!! She sells as a 3-in-1 prospect come sale day – she will be 8 months pregnant from Xourel Matchmaker

(LOT4) with a nine-month-old embryo bred Summit Payday (Australian National Champion Bull of 2014) heifer calve at foot, included in the lot! Vosshaarnooi is a merging of fine femininity, exceptional capacity and balance like few cows every have – they all come together in this noble and proud beaut of a cow!!


JABOT
MALIBU MALIBU
HAITI
Sire: WILZAK 0464 MARTIN
JINGO
KERNEELSTERBLANCHE VOLGO
NOVAR RE 93 54

Animal: XOUREL VOSHAARNOOI

LAURETTE'S CHAR
LAURETTE'S CHAR BIGBUL
VERGESIGTE 99 14 EUREMIS IDEAL
Dam: LA RHONE DONRO PRINCI
DONRO SOL
LAURETTE'S SOL PRINCI
COWLIM LUPIN PRINCE



LA RHONE DONRO PRINCI

	Calving Ease DIR	Calving Ease DTRS	Gestation Length	Birth WT	200 Day WT	400 Day WT	600 Day WT	Mat Cow WT	Milk	Scrotal Size	Carcase WT	Eye Muscle Area	Rib Fat	Rump Fat	Retail Beef Yield	IMF
	(%)	(%)	(days)	(kg)	(kg)	(kg)	(kg)	(kg)	(kg)	(cm)	(kg)	(cm ²)	(mm)	(mm)	(%)	(%)
EBV	-3.8	-	+2.0	+1.9	+11	+15	+9	+1	-3	-1.2	+11	+1.3	0.0	-0.4	+0.7	-0.1
Acc	39%	-	50%	73%	68%	68%	73%	58%	51%	52%	52%	33%	53%	50%	44%	38%
South African breed average EBV																
SA EBV	-0.3	0.7	-0.1	1.8	14	23	29	29	3	0.7	18	0.6	-0.4	0.0	0.6	0.0
International breed average EBV																
INT EBV	0.2	0.7	-1.6	1.6	18	30	42	43	6	0.9	26	1.4	0.0	-0.3	0.7	-0.1
Traits observed: BWT,200WT,400WT,600WT, FAT,EMA,IMF,DOC																

Xourel Ferdinand

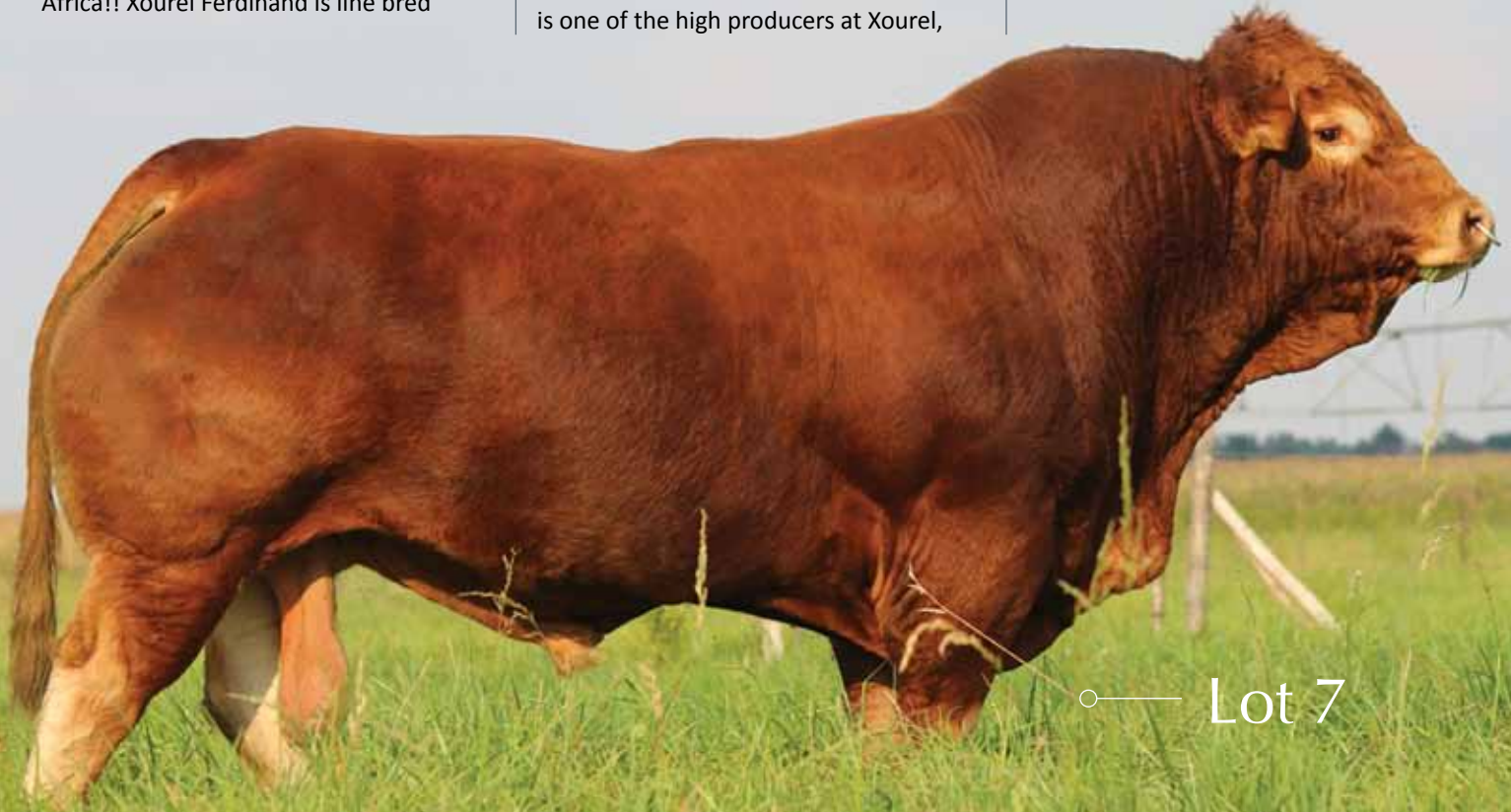
XRL1253

XOUREL FERDINAND - XRL1253


Arguably one of the best homozygote polled Limousin bulls ever bred in South Africa!! Xourel Ferdinand is line bred

Vergesigte Rambler Sheenan, wit alot of depth, fulfilled body and exceptional length, not normally found on polled Limousin bulls in South Africa!! His dam is one of the high producers at Xourel,

producing some of our best polled calves with reproduction figures of 5 calves over an ICP of 341 days.Ferdinand is a polled herd sire prospect like non other in SA!



Lot 7

	Calving Ease DIR	Calving Ease DTRS	Gestation Length	Birth WT	200 Day WT	400 Day WT	600 Day WT	Mat Cow WT	Milk	Scrotal Size	Carcase WT	Eye Muscle Area	Rib Fat	Rump Fat	Retail Beef Yield	IMF
	(%)	(%)	(days)	(kg)	(kg)	(kg)	(kg)	(kg)	(kg)	(cm)	(kg)	(cm ²)	(mm)	(mm)	(%)	(%)
EBV	-3.1	-	-	+3.5	+27	+44	+54	-	+4	+1.9	-	+3.0	+0.5	+0.5	+0.8	-0.1
Acc	41%	-	-	75%	66%	66%	66%	-	43%	61%	-	35%	43%	42%	37%	30%
South African breed average EBV																
SA EBV	-0.3	0.7	-0.1	1.8	14	23	29	29	3	0.7	18	0.6	-0.4	0.0	0.6	0.0
International breed average EBV																
INT EBV	0.2	0.7	-1.6	1.6	18	30	42	43	6	0.9	26	1.4	0.0	-0.3	0.7	-0.1
Traits Observed: BWT,200WT,400WT,600WT,SS,FAT,EMA,IMF,DOC																

VERGESIGTE 01 60 RAMBLER TARVI
 VERGESIGTE FN0572
 JACRE KWALI VG9984
Sire: VERGESIGTE 08035 RAMBLER VILLY
 VERGESIGTE 95 114 DOUBLE POENA VILLY
 VERGESIGTE 0156 IDEAL VILLY
 VERGESIGTE 99 44 RAMBLER IDEAL

Animal: XOUREL FERDINAND

VERGESIGTE RAMBLER SHEENAN
 VERGESIGTE 01 60 RAMBLER TARVI
 VERGESIGTE 99 57 RAMBLER ULYSSY
Dam: VERGESIGTE 09 53 RAMBLER
 JACRE INCREDIBLE VG9734
 JACRE LILY VG0048
 JACRE DELIA VG9223

Homozygote
 polled certified



Also on offer

Lot 1 - Promises a special embryo bred heifer from FN0938 x Escape. This will make her a full sibling of Lot 4, Xourel Matchmaker! She is definitely one of the best embryo bred heifers of the 2016 heifer crop at Xourel.

Lot 4 - Xourel Matchmaker! He is naturally bred from FN0938, one of the main ET donors at Xourel and was one of Xourel's anchor breeding sires the past season, this Escape son promises some exceptional traits!!

Lot 5 - Xourel Annabel (XRL117) - Show cow out of La Rhone Howard and LCB0777, one of the most productive cows in our herd! Xourel Annabel packs a ICP of 332/4! She will be pregnant from one of the main herd sires at Xourel! Having been the Vryburg junior champion in 2013, she promises to breed them fine feminine!!

Lot 6 - Xourel Rooikappie (XRL1456) – Bred out of Xourel Superman from and exceptionally productive FN0210 daughter! She promises to breed them like they should be bred!

Xourel Generaal (XRL1458) - The youngest of the bulls on sale – he packs excellent La Rhone Escape potential into a neat, long muscled beef bull!! Bred from DK0884, a prominent Xourel breeding cow, he promises extraordinary growth!!

Xourel Annabel — XRL117

Xourel Oshikati (XRL1417) - An Escape son with some high beef qualities.

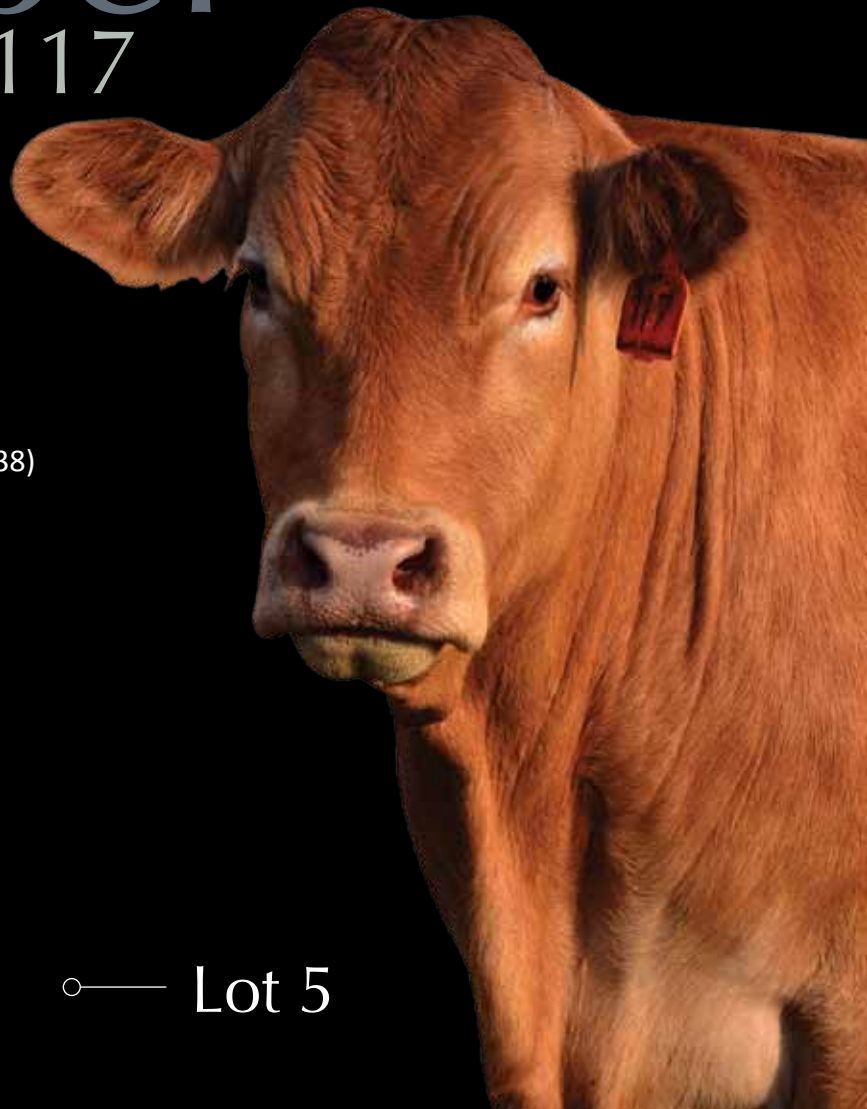
Xourel Snoekie (XRL1312) - A La Rhone Landlord daughter out and maternal sister to XRL117!

Windgat Daughter on offer: Xourel Lize-Marie (XRL1538) & Xourel Annie (XRL1534)

La Rhone Escape Daughters on offer: Xourel Triomf (XRL1546), Xourel Oumie (XRL1542) & Xourel Starlight (XRL1537)



— Lot 5



XOUREL gradually invite all interested breeders, clients and friends to attend a cattlemens braai on the evening of 1 August 2017. RSVP with Derick 079 602 5376.

All animals will carry the Xourel Breeding, Selection, Performance Recording and Ethical standards! All necessary document will be available on sale day or feel free to address any and all enquiries to the Xourel team.

Transport on animals will be arranged and subsidised.

Come and enjoy sale day with us!!

Sale Info:

DATE: 2 August 2017 at 11:00

VENUE: Lichtenburg Showgrounds, 2km from Lichtenburg on the Koster road

GPS: 26°09'27.68'' S 26°11'18.88''E

Derick le Roux • +27 79 602 5376 • derick@xourel.co.za

www.xourel.co.za